

DÜYEK

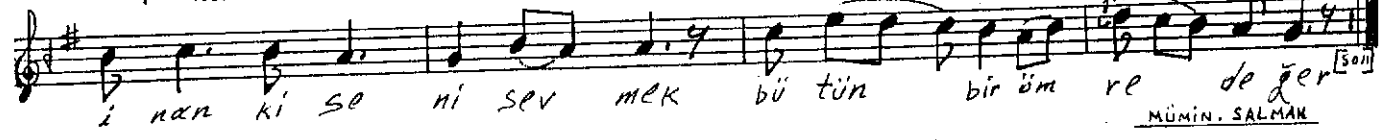
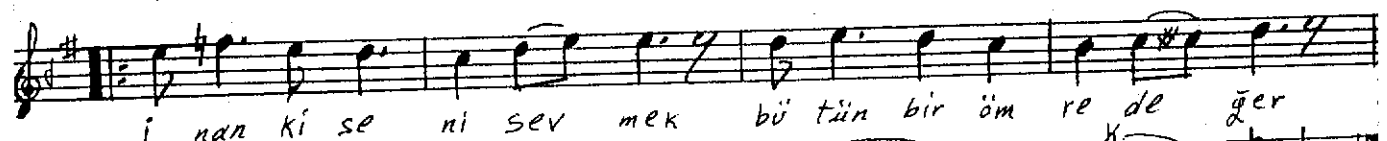
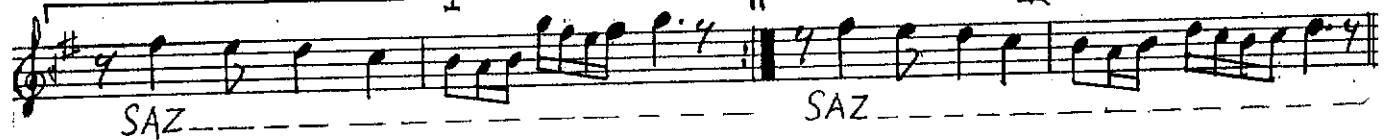
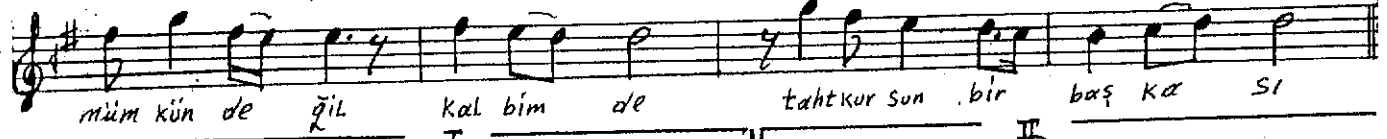
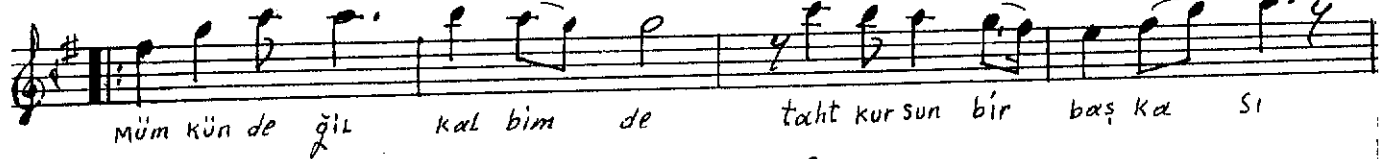
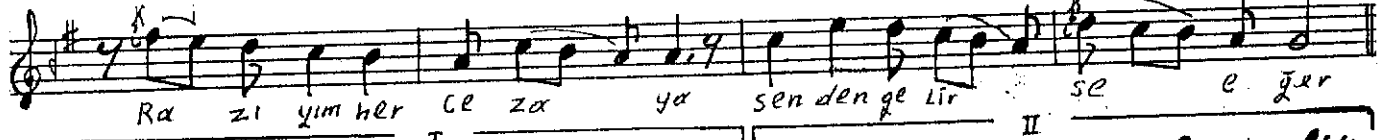
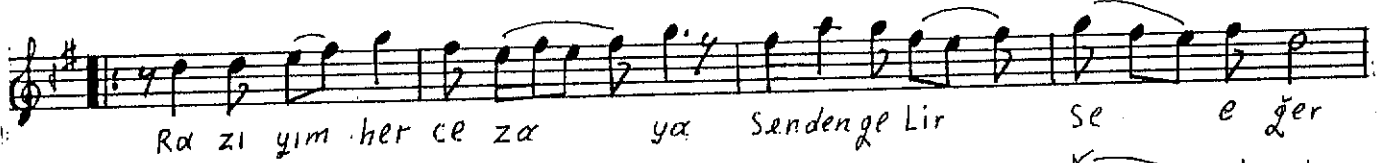
RAST ŞARKI

BESTE: MÜMIN. SALMAN

SENİ BİR AN DÜŞÜNMEK

GÜFTE: LÜTFÜ. ALACALAR

(19) 176



Seni bir an düşünmek Sanki bir ömre değer
 Raziyim her cezaya Senden gelirse eğer
 Mümkün değil kalbimde taht kursun bir başkası
 İnanki seni sevmek bütün bir ömre değer

MÜMIN. SALMAN